

# RUCIKA

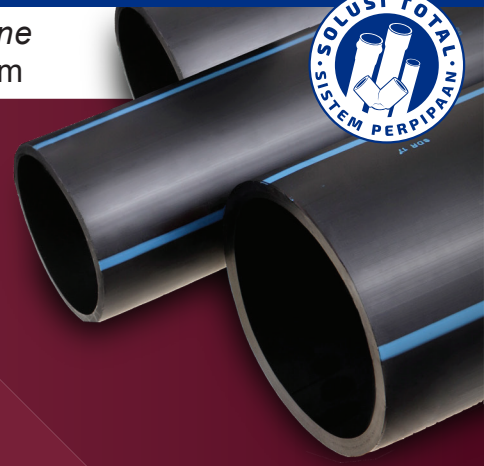
# BLACK

## DAFTAR HARGA PIPA HDPE

Aplikasi Pipa Polyethylene  
untuk Jaringan Air Minum



© 2021 JAPAN INSTITUTE  
OF PLANT MAINTENANCE



Efektif: 20 Juni 2023

DN		PE-100											
		SDR 9 (PN 20)		SDR 11 (PN 16)		SDR 13,6 (PN 12,5)		SDR 17 (PN 10)		SDR 21 (PN 8)		SDR 26 (PN 6)	
(mm)	(Inch)	Tebal (mm)	Harga (Rp) (m)	Tebal (mm)	Harga (Rp) (m)	Tebal (mm)	Harga (Rp) (m)	Tebal (mm)	Harga (Rp) (m)	Tebal (mm)	Harga (Rp) (m)	Tebal (mm)	Harga (Rp) (m)
20	½"	2,30	-	1,90	6.700	-	-	-	-	-	-	-	-
25	¾"	2,80	-	2,30	10.100	-	-	-	-	-	-	-	-
32	1"	3,60	-	2,90	16.200	-	-	-	-	-	-	-	-
40	1¼"	4,50	-	3,70	25.600	-	-	-	-	-	-	-	-
50	1½"	5,60	-	4,60	39.600	3,70	32.600	3,00	27.100	-	-	-	-
63	2"	7,10	-	5,80	62.600	4,70	52.000	3,80	42.800	3,00	34.200	-	-
75	2½"	8,40	105.200	6,80	87.400	5,50	72.400	4,50	60.300	3,60	49.100	-	-
90	3"	10,10	151.600	8,20	126.700	6,60	104.100	5,40	86.700	4,30	70.300	3,50	57.400
110	4"	12,30	225.200	10,00	187.700	8,10	156.000	6,60	129.000	5,30	105.500	4,30	86.800
125*	5"	14,00	291.300	11,40	243.600	9,20	201.100	7,40	164.600	6,00	134.900	4,80	109.600
140		15,70	364.900	12,70	-	10,30	-	8,30	-	6,70	-	5,40	-
160	6"	17,90	475.200	14,60	398.400	11,80	328.600	9,50	269.600	7,70	221.400	6,20	180.000
180*		20,10	601.200	16,40	-	13,30	417.100	10,70	341.100	8,60	-	6,90	-
200	8"	22,40	743.400	18,20	621.000	14,70	511.500	11,90	420.700	9,60	344.700	7,70	279.400
225*		25,20	940.900	20,50	785.900	16,60	649.600	13,40	533.700	10,80	435.600	8,60	351.400
250	10"	27,90	1.158.300	22,70	967.600	18,40	799.500	14,80	654.000	11,90	533.200	9,60	436.000
280*		31,30	1.453.500	25,40	1.211.800	20,50	1.000.500	16,60	821.700	13,40	672.800	10,70	543.000
315	12"	35,20	1.841.700	28,60	1.535.500	23,20	1.268.800	18,70	1.040.400	15,00	845.400	12,10	692.600
355	14"	39,70	2.335.300	32,20	1.946.800	26,10	1.610.800	21,10	1.323.900	16,90	1.073.600	13,60	874.100
400	16"	44,70	2.962.100	36,30	2.471.800	29,40	2.043.300	23,70	1.673.300	19,10	1.368.600	15,30	1.108.500
450*	18"	50,30	3.750.400	40,90	3.130.800	33,10	2.586.600	26,70	2.120.100	21,50	1.730.800	17,20	1.401.500
500	20"	55,80	4.621.500	45,40	3.862.100	36,80	3.189.800	29,60	2.611.600	23,90	2.135.400	19,10	1.728.900
560*	22"	62,20	5.798.300	50,80	4.838.400	41,20	4.003.400	33,20	3.281.500	26,70	2.699.600	21,40	2.167.100
630	24"	70,00	7.337.200	57,20	6.130.300	46,30	5.064.900	37,30	4.146.300	30,00	3.376.100	24,10	2.745.900
710	28"	-	-	-	-	-	6.431.500	42,10	5.272.900	33,90	4.298.300	27,20	3.489.900
800		-	-	-	-	-	-	47,4	6.687.300	38,1	5.541.600	30,6	4.496.000
900		-	-	-	-	-	-	53,3	8.602.700	42,9	7.011.700	34,4	5.709.100
1000		-	-	-	-	-	-	59,3	10.627.900	47,7	8.662.800	38,2	7.016.600

\*BERDASARKAN PERMINTAAN

- Note :
1. HARGA BELUM TERMASUK PPN 11%, LOKO PABRIK DI CIBITUNG, BEKASI DIATAS TRUK
  2. HARGA DAPAT BERUBAH SEWAKTU-WAKTU TANPA PEMBERITAHUAN TERLEBIH DAHULU
  3. STANDARD: SNI 4829.2:2015; ISO 4427-2007
  4. MATERIAL PE -100



**PT WAHANA DUTA JAYA RUCIKA**

ALIA Building 7<sup>th</sup> Floor, Jl. M.I Ridwan Rais 10-18,  
Jakarta 10110 - INDONESIA

Telp: (021) 386 7717

Fax: (021) 386 7686

Email: info@rucika.co.id

f Rucika @rucikaofficial @rucikaofficial

www.rucika.co.id

22.05.2024

www.rucika.co.id

# RUCIKA

## Aplikasi Pipa Polyethylene untuk Jaringan Air Minum



# BLACK

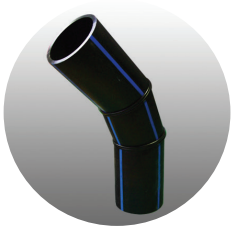
# DAFTAR HARGA FITTING SEGMENTED HDPE



© 2021 JAPAN INSTITUTE OF PLANT MAINTENANCE

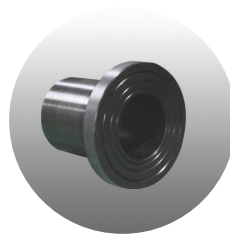


### BEND 45DGR SEGMENTED



DN (mm)	Price / Unit (Rupiah)
63	172,000
75	207,000
90	243,000
110	360,000
160	764,000
200	1,191,000
250	2,093,000
315	2,944,000
355	4,168,000
400	4,781,000
450	6,400,000
500	7,828,000
560	8,177,000
630	12,302,000

### STUB END INJECTION MOLDING



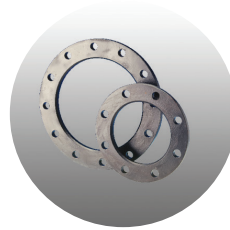
DN (mm)	Price / Unit (Rupiah)
63	76,000
75	129,000
90	161,000
110	177,000
160	557,000
200	1,089,000
250	1,407,000
315	2,795,000
355	3,848,000
400	5,361,000
450	6,711,000
500	8,247,000
630	18,371,000

### BEND 90DGR SEGMENTED



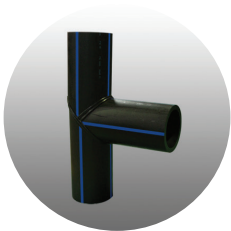
DN (mm)	Price / Unit (Rupiah)
63	166,000
75	250,000
90	251,000
110	338,000
160	718,000
200	1,230,000
250	2,093,000
315	3,042,000
355	4,793,000
400	5,498,000
450	7,360,000
500	9,002,000
560	9,403,000
630	15,540,000

### FLANGE



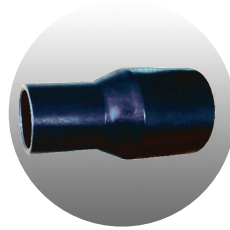
DN (mm)	Price / Unit (Rupiah)
63	147,000
75	194,000
90	240,000
110	367,000
160	566,000
200	902,000
250	1,177,000
315	2,445,000
400	4,584,000

### EQUAL TEE SEGMENTED



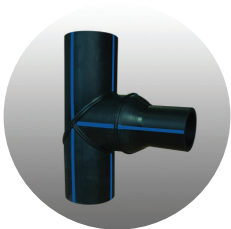
DN (mm)	Price / Unit (Rupiah)
63	294,000
75	328,000
90	259,000
110	384,000
160	965,000
200	1,270,000
250	1,979,000
315	3,140,000
355	4,442,000
400	5,953,000
450	8,333,000
500	9,790,000
560	12,878,000
630	16,541,000

### REDUCER INJECTION MOLDING



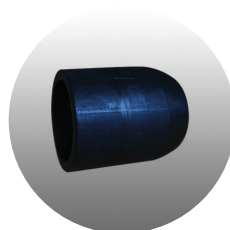
DN (mm)	Price / Unit (Rupiah)
90 X 75	363,000
90 X 63	305,000
110x63	363,000
110 X 90	465,000
160 X 90	756,000
160 X 110	814,000
200 X 160	1,571,000
200 X 110	1,394,000
250 X 160	2,541,000
250 X 200	2,730,000
315 X 200	6,041,000
315 X 250	6,346,000

### UNEQUAL TEE SEGMENTED + INJECTION MOLDING



DN (mm)	Price / Unit (Rupiah)
90 X 75	622,000
90 X 63	564,000
110 x63	747,000
110 X 90	849,000
160 X 90	1,720,000
160 X 110	1,779,000
200 X 160	2,840,000
200 X 110	2,664,000
250 X 160	4,520,000
250 X 200	4,709,000
315 X 200	9,181,000
315 X 250	9,485,000

### CAP INJECTION MOLDING



DN (mm)	Price / Unit (Rupiah)
63	169,000
75	218,000
90	276,000
110	410,000
160	901,000
200	1,743,000
250	2,832,000

Note :

1. Harga Belum Termasuk PPN 11%, Loko Pabrik Di Cibitung, Bekasi Diatas Truk
2. Harga Dapat Berubah Sewaktu-waktu Tanpa Pemberitahuan Terlebih Dahulu
3. Standard: SNI 4829.2:2015; ISO 4427-2007
4. Material PE -100

# RUCIKA

# BLACK

## DAFTAR HARGA SPOOL PIPE

Aplikasi Pipa *Polyethylene*  
untuk Jaringan Air Bertekanan



© 2021 JAPAN INSTITUTE  
of PLANT MAINTENANCE



### SPOOL PIPE HDPE RUCIKA BLACK PN 16 - SINGLE FLANGE

SPOOL PIPE - FLANGE JIS 10K		
DN	Price / Unit	
	6 METER	12 METER
(mm)	(Rupiah)	(Rupiah)
315	14,806,221	24,034,431
355	18,531,683	30,268,087
500	39,335,348	62,388,911
630	62,495,247	99,332,889

SPOOL PIPE - FLANGE ISO		
DN	Price / Unit	
	6 METER	12 METER
(mm)	(Rupiah)	(Rupiah)
315	15,068,690	24,296,900
355	19,572,933	31,309,337
500	43,086,616	66,140,179
630	65,020,058	101,857,699

SPOOL PIPE - FLANGE JIS 16K		
DN	Price / Unit	
	6 METER	12 METER
(mm)	(Rupiah)	(Rupiah)
315	15,592,653	24,820,863
355	20,622,092	32,358,495
500	45,600,385	68,653,948
630	70,206,279	107,043,921

SPOOL PIPE - FLANGE ANSI 150		
DN	Price / Unit	
	6 METER	12 METER
(mm)	(Rupiah)	(Rupiah)
315	14,629,153	23,857,363
355	18,536,485	30,272,889
500	39,991,265	63,044,827
630	61,621,719	98,459,361

### SPOOL PIPE HDPE RUCIKA BLACK PN 16 - DOUBLE FLANGE

SPOOL PIPE - FLANGE JIS 10K		
DN	Price / Unit	
	6 METER	12 METER
(mm)	(Rupiah)	(Rupiah)
315	26,788,447	36,012,644
355	31,653,236	43,384,553
500	84,546,467	107,589,938
630	115,288,891	152,110,514

SPOOL PIPE - FLANGE ISO		
DN	Price / Unit	
	6 METER	12 METER
(mm)	(Rupiah)	(Rupiah)
315	28,418,736	37,642,933
355	34,907,939	46,639,255
500	98,876,128	119,919,599
630	130,885,167	167,706,791

SPOOL PIPE - FLANGE JIS 16K		
DN	Price / Unit	
	6 METER	12 METER
(mm)	(Rupiah)	(Rupiah)
315	29,518,734	38,742,932
355	42,143,419	53,874,736
500	102,382,407	125,425,878
630	171,531,784	208,353,407

SPOOL PIPE - FLANGE ANSI 150		
DN	Price / Unit	
	6 METER	12 METER
(mm)	(Rupiah)	(Rupiah)
315	23,707,628	37,492,045
355	28,604,052	46,312,953
500	77,741,573	122,661,769
630	99,341,477	162,867,084

Note :

1. HARGA BELUM TERMASUK PPN 11%, LOKO PABRIK DI GRESIK, JAWA TIMUR, DI ATAS TRUK
2. HARGA DAPAT BERUBAH SEWAKTU-WAKTU TANPA PEMBERITAHUAN TERLEBIH DAHULU
3. STANDARD: ISO 4427-2007
4. MATERIAL Pipa : PE-100 PN16, FLANGE : STEEL HOT DIP GALVANISED, BOLT NUT SET : HOT DIP GALVANISED, GASKET : EPDM RUBBER

# RUCIKA

## Aplikasi Pipa Polyethylene untuk Jaringan Air Minum



# BLACK

## DAFTAR HARGA

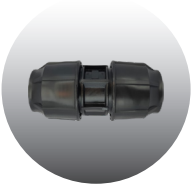
## FITTING MECHANICAL JOINT



© 2021 JAPAN INSTITUTE  
OF PLANT MAINTENANCE



### PP STRAIGHT COUPLER (SC)



DN (mm)	Price / Unit (Rupiah)
20	18,900
25	25,100
32	35,500
40	78,500
50	88,900
63	136,700
90	333,900

### PP REDUCING COUPLER (RC)



DN (mm)	Price / Unit (Rupiah)
25 x 20	22,200
32 x 25	31,200
50 x 32	68,100
63 x 32	103,600
63 x 50	124,400

### PP FEMALE THREADED ADAPTOR (FTA)



DN (mm)	Price / Unit (Rupiah)
20 x 1/2"	14,200
25 x 3/4"	16,100
110 x 4"	896,200

### PP EQUAL BEND (EB)



DN (mm)	Price / Unit (Rupiah)
20	21,300
25	27,400
32	38,800
50	105,900
63	155,100

### PP MALE THREADED ADAPTOR (MTA)



DN (mm)	Price / Unit (Rupiah)
20 x 1/2"	11,800
25 x 3/4"	14,700
32 x 1"	20,300
50 x 1 1/2"	54,900
63 x 2"	75,200

### PP FEMALE BEND (FB)



DN (mm)	Price / Unit (Rupiah)
20 x 1/2"	15,600
25 x 3/4"	20,300
32 x 1"	30,300

### PP END CAP (EC)



DN (mm)	Price / Unit (Rupiah)
50	54,400
63	75,200

### PP MALE BEND (MB)



DN (mm)	Price / Unit (Rupiah)
20 x 1/2"	15,600
25 x 3/4"	18,900
32 x 1"	26,500

### PP REDUCING TEE (RT)



DN (mm)	Price / Unit (Rupiah)
32 x 25	52,000

### PP EQUAL TEE (ET)



DN (mm)	Price / Unit (Rupiah)
20	27,400
25	36,000
32	55,300
50	149,900
63	236,900

### PP MALE TEE (MT)



DN (mm)	Price / Unit (Rupiah)
25 x 3/4"	33,300

Note :

1. HARGA BELUM TERMASUK PPN 11%, LOKO PABRIK DI CIBITUNG, BEKASI DIATAS TRUK
2. HARGA DAPAT BERUBAH SEWAKTU-WAKTU TANPA PEMBERITAHUAN TERLEBIH DAHULU
3. STANDARD: BS 5114 (COMPATIBLE DENGAN PIPA STANDARD ISO 4427 & SNI 4829)
4. MATERIAL PP