

RUCIKA

Dimana air mengalir sampai jauh

DAPATKAN HARGA PRODUK yang Anda Cari di sini!



KEBANGGAAN INDONESIA KUALITAS DUNIA



CALCIUM ZINC TANPA TIMBAL



© 2021 JAPAN INSTITUTE OF PLANT MAINTENANCE

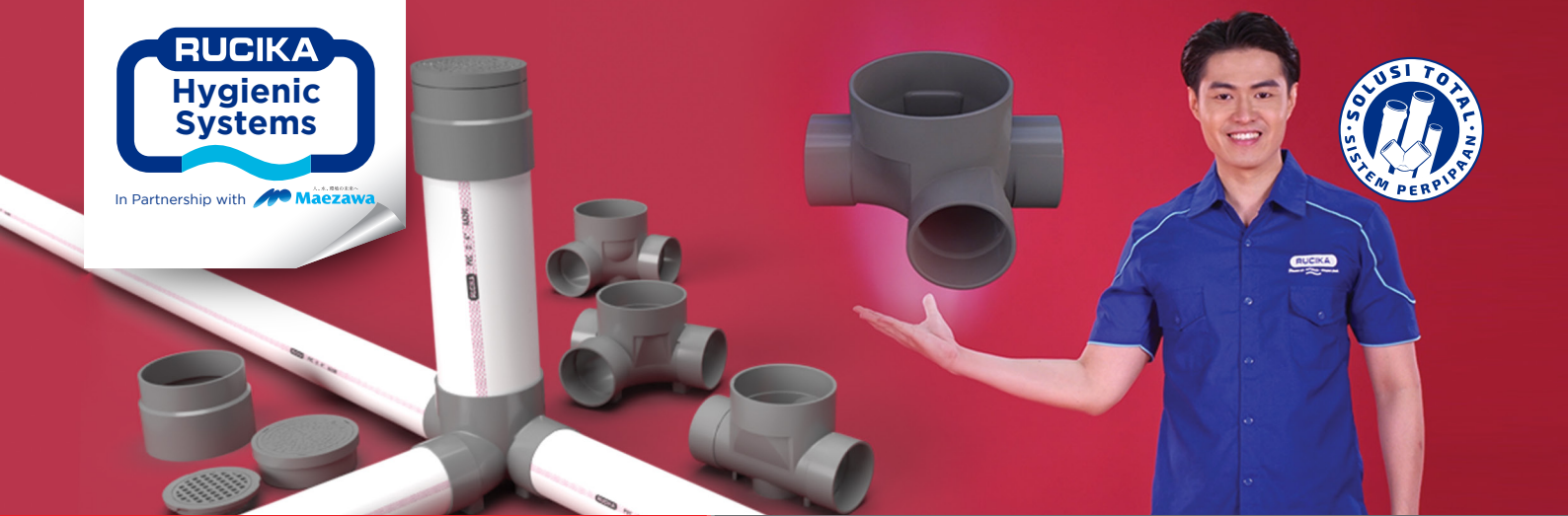
Efektif : 13 September 2022

RUCIKA

Dimana air mengalir sampai jauh

Pipa PVC Standard | Pipa JIS | Lem Perekat Pipa PVC
Access Fitting | Special Fitting | Transparent Fitting
Pipa & Fitting PP-R

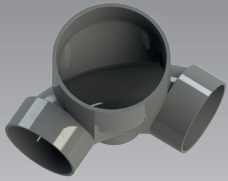




Access Fitting

Rangkaian produk yang dapat memudahkan perawatan instalasi perpipaan air kotor di dalam dan luar ruangan

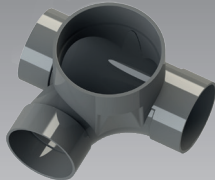
90L (D)



Connector 6" Access Cap 6"

| DN | | ISI / BOX |
|--------------------|-------|-----------|
| mm | Inch | |
| 100 x 150 | 4 x 6 | 2 |
| Harga / Set | | |
| Rp. 585.900,- | | |

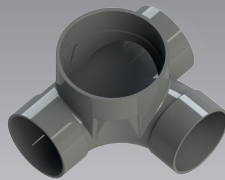
90Y LEFT (D)



Connector 6" Access Cap 6"

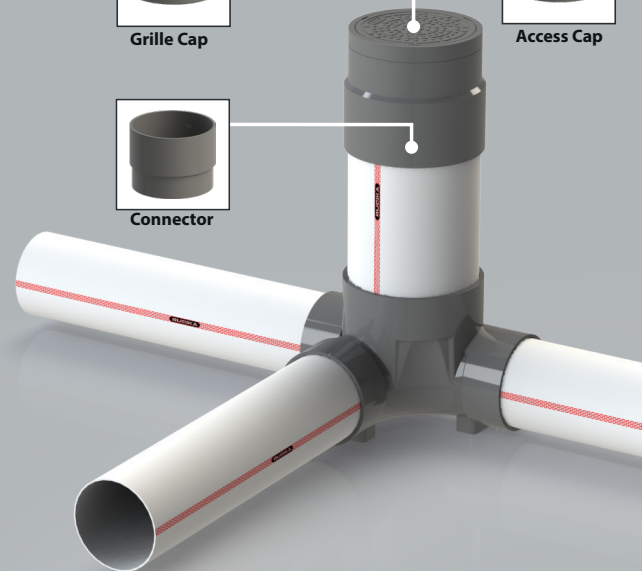
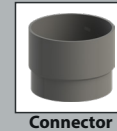
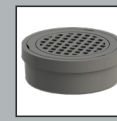
| DN | | ISI / BOX |
|--------------------|-------|-----------|
| mm | Inch | |
| 100 x 150 | 4 x 6 | 2 |
| Harga / Set | | |
| Rp. 642.300,- | | |

90Y RIGHT (D)

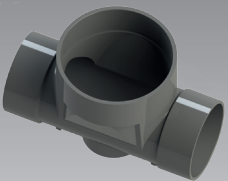


Connector 6" Access Cap 6"

| DN | | ISI / BOX |
|--------------------|-------|-----------|
| mm | Inch | |
| 100 x 150 | 4 x 6 | 2 |
| Harga / Set | | |
| Rp. 642.300,- | | |



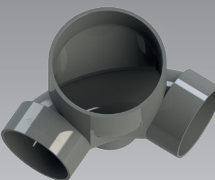
ST (D)



Connector 6" Access Cap 6"

| DN | | ISI / BOX |
|--------------------|-------|-----------|
| mm | Inch | |
| 100 x 150 | 4 x 6 | 2 |
| Harga / Set | | |
| Rp. 578.000,- | | |

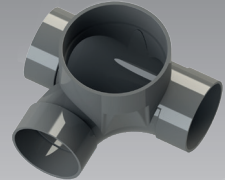
90L (D) With GRILLE CAP



Connector 6" Grille Cap 6"

| DN | | ISI / BOX |
|--------------------|-------|-----------|
| mm | Inch | |
| 100 x 150 | 4 x 6 | 2 |
| Harga / Set | | |
| Rp. 724.800,- | | |

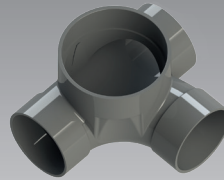
90Y LEFT (D) With GRILLE CAP



Connector 6" Grille Cap 6"

| DN | | ISI / BOX |
|--------------------|-------|-----------|
| mm | Inch | |
| 100 x 150 | 4 x 6 | 2 |
| Harga / Set | | |
| Rp. 781.600,- | | |

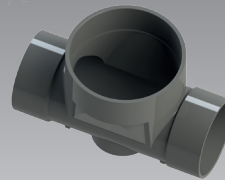
90Y RIGHT (D) With GRILLE CAP



Connector 6" Grille Cap 6"

| DN | | ISI / BOX |
|--------------------|-------|-----------|
| mm | Inch | |
| 100 x 150 | 4 x 6 | 2 |
| Harga / Set | | |
| Rp. 781.600,- | | |

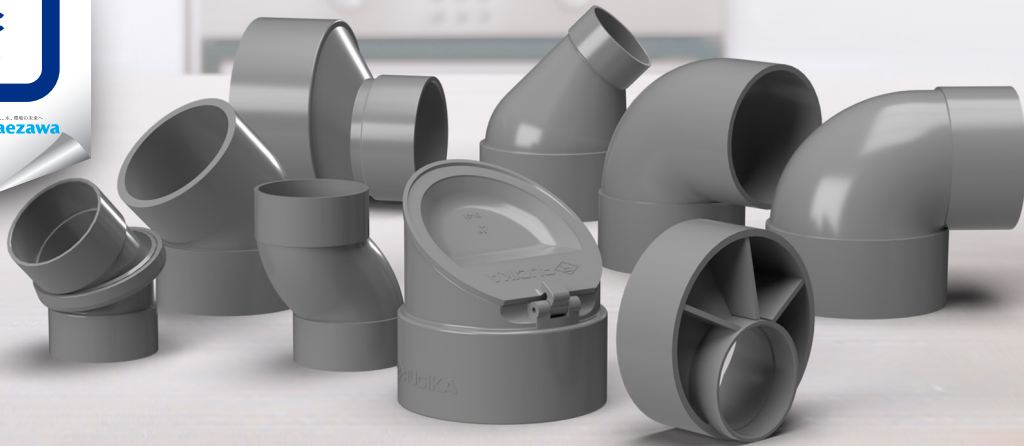
ST (D) With GRILLE CAP



Connector 6" Grille Cap 6"

| DN | | ISI / BOX |
|--------------------|-------|-----------|
| mm | Inch | |
| 100 x 150 | 4 x 6 | 2 |
| Harga / Set | | |
| Rp. 716.900,- | | |

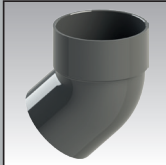
*Harga sudah termasuk PPN 11%
DN: Diameter Nominal



Special Fitting

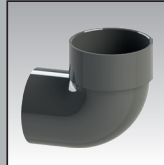
Rangkaian produk yang dapat memudahkan dan mempercepat pekerjaan instalasi air kotor/buangan

ELBOW SOCKET SPIGOT 45° 45 KL



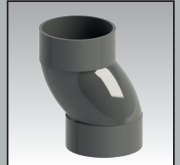
| DN | | ISI / BOX | HARGA / PCS* |
|-----|------|-----------|--------------|
| mm | inch | | |
| 50 | 2 | 150 | Rp. 15.000,- |
| 75 | 3 | 36 | Rp. 33.000,- |
| 100 | 4 | 18 | Rp. 56.500,- |

ELBOW SOCKET SPIGOT 90° 90 KL



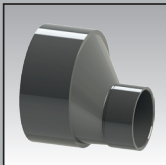
| DN | | ISI / BOX | HARGA / PCS* |
|-----|------|-----------|--------------|
| mm | inch | | |
| 50 | 2 | 72 | Rp. 14.400,- |
| 75 | 3 | 30 | Rp. 33.900,- |
| 100 | 4 | 15 | Rp. 67.800,- |

S SOCKET VUSS



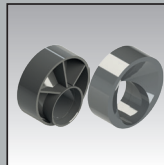
| DN | | ISI / BOX | HARGA / PCS* |
|-----|------|-----------|---------------|
| mm | inch | | |
| 50 | 2 | 90 | Rp. 32.200,- |
| 75 | 3 | 26 | Rp. 71.000,- |
| 100 | 4 | 12 | Rp. 121.300,- |

ECCENTRIC INCREASER OJH



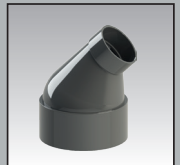
| DN | | ISI / BOX | HARGA / PCS* |
|----------|-------|-----------|--------------|
| mm | inch | | |
| 75 x 50 | 3 x 2 | 96 | Rp. 19.500,- |
| 100 x 50 | 4 x 2 | 48 | Rp. 32.600,- |
| 100 x 75 | 4 x 3 | 30 | Rp. 37.900,- |

ECCENTRIC INCREASER BUSHING VUHB



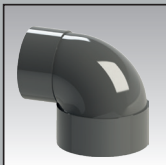
| DN | | ISI / BOX | HARGA / PCS* |
|----------|-------|-----------|--------------|
| mm | inch | | |
| 75 x 50 | 3 x 2 | 160 | Rp. 19.500,- |
| 100 x 50 | 4 x 2 | 84 | Rp. 32.600,- |
| 100 x 75 | 4 x 3 | 75 | Rp. 37.900,- |

ELBOW INCREASER 45° VU 45 L



| DN | | ISI / BOX | HARGA / PCS* |
|----------|-------|-----------|--------------|
| mm | inch | | |
| 75 x 50 | 3 x 2 | 64 | Rp. 35.300,- |
| 100 x 50 | 4 x 2 | 31 | Rp. 47.100,- |
| 100 x 75 | 4 x 3 | 27 | Rp. 60.700,- |

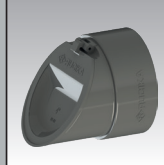
ELBOW INCREASER 90° VUL



| DN | | ISI / BOX | HARGA / PCS* |
|---------------------|--------|-----------|---------------|
| mm | inch | | |
| Baru 50 x 40 | 2 x 1½ | 34 | Rp. 75.500,- |
| 75 x 50 | 3 x 2 | 36 | Rp. 17.700,- |
| Baru 75 x 65 | 3 x 2½ | 32 | Rp. 128.200,- |
| 100 x 50 | 4 x 2 | 20 | Rp. 23.800,- |
| 100 x 75 | 4 x 3 | 18 | Rp. 36.200,- |

BARU

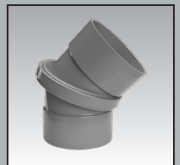
BACKFLOW VALVE LBFA



| DN | | ISI / BOX | HARGA / PCS* |
|-----|------|-----------|---------------|
| mm | inch | | |
| 75 | 3 | 12 | Rp. 28.100,- |
| 100 | 4 | 18 | Rp. 43.100,- |
| 150 | 6 | 4 | Rp. 109.400,- |

BARU

FLEXIBLE ELBOW ML



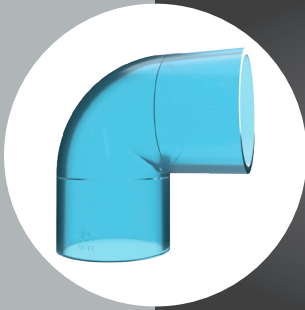
| DN | | ISI / BOX | HARGA / PCS* |
|-----|------|-----------|---------------|
| mm | inch | | |
| 50 | 2 | 22 | Rp. 164.200,- |
| 75 | 3 | 22 | Rp. 216.800,- |
| 100 | 4 | 12 | Rp. 360.200,- |

Efektif: 13 September 2022

*Harga sudah termasuk PPN 11%
DN: Diameter Nominal

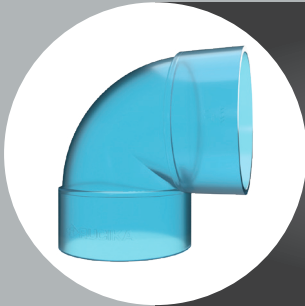
Transparent Fitting

Rangkaian produk yang dapat memudahkan untuk memudahkan proses inspeksi saat instalasi pipa dan penyambungan yang tepat sampai batas stopper



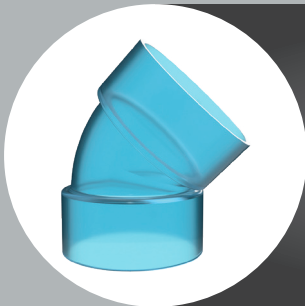
**TRANSPARENT FITTING
ELBOW 90° (AW)**

| DN | | Isi / Box | Harga / Pcs* |
|----|------|--------------|---------------|
| mm | Inch | | |
| 16 | ½" | 225 | Rp. 5.600,- |
| 20 | ¾" | 145 | Rp. 7.400,- |
| 25 | 1" | 80 | Rp. 10.400,- |
| 50 | 2" | 18 | Rp. 45.000,- |
| 75 | 3" | 16 | Rp. 102.600,- |



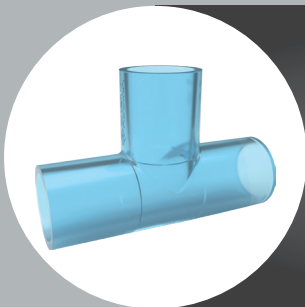
**TRANSPARENT FITTING
ELBOW 90° (D)**

| DN | | Isi / Box | Harga / Pcs* |
|-----|------|--------------|--------------|
| mm | Inch | | |
| 100 | 4" | 15 | Rp. 72.800,- |



**TRANSPARENT FITTING
ELBOW 45° (D)**

| DN | | Isi / Box | Harga / Pcs* |
|-----|------|--------------|--------------|
| mm | Inch | | |
| 100 | 4" | 15 | Rp. 56.400,- |




**TRANSPARENT FITTING
TEE (AW)**

| DN | | Isi / Box | Harga / Pcs* |
|----|------|--------------|--------------|
| mm | Inch | | |
| 16 | ½" | 150 | Rp. 8.000,- |
| 20 | ¾" | 100 | Rp. 10.800,- |

PIPA PVC RUCIKA STANDARD UNTUK APLIKASI AIR BERSIH & AIR LIMBAH

| PRODUK | DN | | OD (mm) | 4 M / BATANG | | 5,8 M / BATANG* | |
|--|-----|------|-----------------|-----------------|-----------------|-----------------|-----------------|
| | mm | inch | | AW** | D*** | AW** | D*** |
|  <p>RUCIKA Standard</p> | 16 | ½" | 22 | Rp. 26.800,- | * | Rp. 39.700,- | * |
| | 20 | ¾" | 26 | Rp. 36.300,- | * | Rp. 54.400,- | * |
| | 25 | 1" | 32 | Rp. 49.700,- | * | Rp. 74.100,- | * |
| | 35 | 1¼" | 42 | Rp. 74.200,- | Rp. 46.600,- | Rp. 111.300,- | Rp. 70.200,- |
| | 40 | 1½" | 48 | Rp. 85.200,- | Rp. 52.700,- | Rp. 127.600,- | Rp. 78.700,- |
| | 50 | 2" | 60 | Rp. 108.900,- | Rp. 67.500,- | Rp. 162.900,- | Rp. 101.000,- |
| | 65 | 2½" | 76 | Rp. 158.700,- | Rp. 91.200,- | Rp. 237.800,- | Rp. 136.600,- |
| | 75 | 3" | 89 | Rp. 223.500,- | Rp. 121.000,- | Rp. 335.000,- | Rp. 181.100,- |
| | 100 | 4" | 114 | Rp. 370.300,- | Rp. 190.300,- | Rp. 555.000,- | Rp. 285.100,- |
| | 125 | 5" | 140 | Rp. 586.500,- | Rp. 292.900,- | Rp. 879.600,- | Rp. 438.800,- |
| | 150 | 6" | 165 | Rp. 822.500,- | Rp. 386.200,- | Rp. 1.233.700,- | Rp. 578.800,- |
| | 200 | 8" | 216 | Rp. 1.380.000,- | Rp. 679.000,- | Rp. 2.070.100,- | Rp. 1.018.100,- |
| | 250 | 10" | 267 | Rp. 2.133.700,- | Rp. 1.118.400,- | Rp. 3.200.500,- | Rp. 1.677.300,- |
| 300 | 12" | 318 | Rp. 3.008.500,- | Rp. 1.569.700,- | Rp. 4.512.500,- | Rp. 2.354.500,- | |

PIPA PVC RUCIKA JIS K-6741 / K-6742 UNTUK APLIKASI AIR BERSIH & AIR LIMBAH

| PRODUK | DN | | OD (mm) | 4 M / BATANG | | 5,8 M / BATANG* | |
|--|-----|------|-----------------|-----------------|-----------------|-----------------|-----------------|
| | mm | inch | | VP** | VU*** | VP** | VU*** |
|  <p>RUCIKA JIS</p> | 16 | ½" | 22 | Rp. 48.500,- | * | Rp. 69.700,- | * |
| | 20 | ¾" | 26 | Rp. 58.000,- | * | Rp. 84.200,- | * |
| | 25 | 1" | 32 | Rp. 84.200,- | * | Rp. 121.700,- | * |
| | 35 | 1¼" | 42 | Rp. 113.600,- | * | Rp. 164.000,- | * |
| | 40 | 1½" | 48 | Rp. 147.500,- | Rp. 77.400,- | Rp. 213.700,- | Rp. 111.900,- |
| | 50 | 2" | 60 | Rp. 209.400,- | Rp. 97.600,- | Rp. 303.400,- | Rp. 141.100,- |
| | 65 | 2½" | 76 | Rp. 269.300,- | Rp. 154.300,- | Rp. 390.400,- | Rp. 223.400,- |
| | 75 | 3" | 89 | Rp. 429.000,- | Rp. 225.500,- | Rp. 621.400,- | Rp. 327.000,- |
| | 100 | 4" | 114 | Rp. 662.800,- | Rp. 338.300,- | Rp. 960.700,- | Rp. 490.400,- |
| | 125 | 5" | 140 | Rp. 829.600,- | Rp. 509.400,- | Rp. 1.202.800,- | Rp. 738.500,- |
| | 150 | 6" | 165 | Rp. 1.245.400,- | Rp. 732.200,- | Rp. 1.805.900,- | Rp. 1.061.800,- |
| | 200 | 8" | 216 | Rp. 1.883.600,- | Rp. 1.221.600,- | Rp. 2.730.600,- | Rp. 1.771.200,- |
| | 250 | 10" | 267 | Rp. 2.869.700,- | Rp. 1.809.000,- | Rp. 4.160.500,- | * |
| 300 | 12" | 318 | Rp. 4.070.800,- | Rp. 2.539.900,- | Rp. 5.902.100,- | * | |

Keterangan :

- * Khusus Wilayah Medan.
- ** AW / VP : Pipa untuk tekanan kerja 10 Kg / cm² | *** D / VU : Pipa untuk aplikasi air limbah.
- Harga sudah termasuk PPN 11%.
- Perubahan harga dapat terjadi tanpa pemberitahuan terlebih dahulu.
- DN: Diameter Nominal | OD: Outside Diameter



RUGlue
LEM PIPA & FITTING PVC
Rekat Sempurna

Netto: 400gr

KUALITAS SEMPURNA



LEM PIPA - SAMBUNGAN (FITTING) PVC

| Lem Pipa uPVC | | |
|----------------|--------|-------------|
| Jenis | Ukuran | Harga |
| Kemasan Tube | 50 g | Rp.13.000,- |
| Kemasan Botol | 60 g | Rp.15.600,- |
| Kemasan Kaleng | 100 g | Rp.22.200,- |
| Kemasan Kaleng | 400 g | Rp.61.100,- |

FAUCET ELBOW with Metal Insert (AW)



| DN | | ISI / BOX | HARGA / PCS |
|---------|---------|---------------|--------------|
| mm | inch | | |
| 16 | ½" | 200 (4@50PCS) | Rp. 10.400,- |
| 16 x 20 | ½" x ¾" | 180 | Rp. 15.100,- |
| 20 | ¾" | 120 (4@30PCS) | Rp. 17.600,- |

FAUCET SOCKET with Metal Insert (AW)



| DN | | ISI / BOX | HARGA / PCS |
|---------|---------|---------------|--------------|
| mm | inch | | |
| 16 | ½" | 240 (4@60PCS) | Rp. 10.100,- |
| 16 x 20 | ½" x ¾" | 205 | Rp. 14.800,- |
| 20 | ¾" | 160 (4@40PCS) | Rp. 16.700,- |

ELBOW (AW)



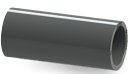
| DN | | ISI / BOX | HARGA / PCS |
|-----|------|-----------|---------------|
| mm | inch | | |
| 16 | ½" | 225 | Rp. 2.500,- |
| 20 | ¾" | 145 | Rp. 3.200,- |
| 25 | 1" | 80 | Rp. 4.700,- |
| 35 | 1¼" | 40 | Rp. 8.100,- |
| 40 | 1½" | 25 | Rp. 11.200,- |
| 50 | 2" | 18 | Rp. 16.900,- |
| 65 | 2½" | 28 | Rp. 26.700,- |
| 75 | 3" | 16 | Rp. 44.400,- |
| 100 | 4" | 9 | Rp. 82.100,- |
| 125 | 5" | 5 | Rp. 124.200,- |
| 150 | 6" | 5 | Rp. 207.500,- |
| 200 | 8" | 2 | Rp. 469.800,- |
| 250 | 10" | 1 | Rp. 627.900,- |
| 300 | 12" | 1 | Rp. 932.700,- |

VALVE SOCKET (AW)



| DN | | ISI / BOX | HARGA / PCS |
|----------|---------|-----------|--------------|
| mm | inch | | |
| 16 x ½" | ½" | 450 | Rp. 1.700,- |
| 20 x ½" | ½" x ¾" | 250 | Rp. 2.700,- |
| 16 x ¾" | ¾" x ½" | 285 | Rp. 2.400,- |
| 20 x ¾" | ¾" | 320 | Rp. 2.500,- |
| 16 x 1" | 1" x ½" | 200 | Rp. 2.700,- |
| 20 x 1" | 1" x ¾" | 175 | Rp. 2.800,- |
| 25 x 1" | 1" | 175 | Rp. 3.200,- |
| 35 x 1¼" | 1¼" | 100 | Rp. 5.700,- |
| 40 x 1½" | 1½" | 60 | Rp. 7.800,- |
| 50 x 2" | 2" | 40 | Rp. 11.300,- |
| 65 x 2½" | 2½" | 54 | Rp. 12.600,- |
| 75 x 3" | 3" | 48 | Rp. 26.200,- |
| 100 x 4" | 4" | 18 | Rp. 46.200,- |

SOCKET (AW)



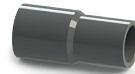
| DN | | ISI / BOX | HARGA / PCS |
|-----|------|-----------|---------------|
| mm | inch | | |
| 16 | ½" | 300 | Rp. 2.200,- |
| 20 | ¾" | 200 | Rp. 2.600,- |
| 25 | 1" | 100 | Rp. 3.800,- |
| 35 | 1¼" | 64 | Rp. 6.300,- |
| 40 | 1½" | 40 | Rp. 9.100,- |
| 50 | 2" | 25 | Rp. 14.000,- |
| 65 | 2½" | 40 | Rp. 23.300,- |
| 75 | 3" | 32 | Rp. 33.500,- |
| 100 | 4" | 12 | Rp. 66.100,- |
| 150 | 6" | 4 | Rp. 139.100,- |
| 200 | 8" | 4 | Rp. 280.800,- |
| 250 | 10" | 2 | Rp. 444.700,- |

CAP (AW)



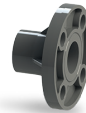
| DN | | ISI / BOX | HARGA / PCS |
|-----|------|-----------|---------------|
| mm | inch | | |
| 16 | ½" | 500 | Rp. 1.500,- |
| 20 | ¾" | 400 | Rp. 1.700,- |
| 25 | 1" | 250 | Rp. 2.600,- |
| 35 | 1¼" | 128 | Rp. 4.100,- |
| 40 | 1½" | 84 | Rp. 7.000,- |
| 50 | 2" | 54 | Rp. 8.100,- |
| 65 | 2½" | 20 | Rp. 16.600,- |
| 75 | 3" | 48 | Rp. 25.000,- |
| 100 | 4" | 18 | Rp. 52.300,- |
| 150 | 6" | 8 | Rp. 89.700,- |
| 200 | 8" | 3 | Rp. 175.900,- |

REDUCING SOCKET (AW)



| DN | | ISI / BOX | HARGA / PCS |
|-----------|-----------|-----------|---------------|
| mm | inch | | |
| 20 x 16 | ¾" x ½" | 225 | Rp. 2.700,- |
| 25 x 16 | 1" x ½" | 215 | Rp. 2.800,- |
| 25 x 20 | 1" x ¾" | 150 | Rp. 3.600,- |
| 35 x 16 | 1¼" x ½" | 110 | Rp. 3.900,- |
| 35 x 20 | 1¼" x ¾" | 110 | Rp. 4.600,- |
| 35 x 25 | 1¼" x 1" | 110 | Rp. 5.300,- |
| 40 x 16 | 1½" x ½" | 72 | Rp. 5.700,- |
| 40 x 20 | 1½" x ¾" | 65 | Rp. 6.000,- |
| 40 x 25 | 1½" x 1" | 65 | Rp. 7.300,- |
| 40 x 35 | 1½" x 1¼" | 45 | Rp. 8.200,- |
| 50 x 16 | 2" x ½" | 45 | Rp. 8.500,- |
| 50 x 20 | 2" x ¾" | 45 | Rp. 9.100,- |
| 50 x 25 | 2" x 1" | 40 | Rp. 10.000,- |
| 50 x 35 | 2" x 1¼" | 45 | Rp. 11.600,- |
| 50 x 40 | 2" x 1½" | 40 | Rp. 12.400,- |
| 65 x 40 | 2½" x 1½" | 20 | Rp. 17.900,- |
| 65 x 50 | 2½" x 2" | 20 | Rp. 19.400,- |
| 75 x 20 | 3" x ¾" | 20 | Rp. 14.400,- |
| 75 x 25 | 3" x 1" | 16 | Rp. 14.900,- |
| 75 x 35 | 3" x 1¼" | 16 | Rp. 18.200,- |
| 75 x 40 | 3" x 1½" | 16 | Rp. 20.200,- |
| 75 x 50 | 3" x 2" | 16 | Rp. 21.600,- |
| 75 x 65 | 3" x 2½" | 12 | Rp. 32.100,- |
| 100 x 40 | 4" x 1½" | 18 | Rp. 52.800,- |
| 100 x 50 | 4" x 2" | 18 | Rp. 57.400,- |
| 100 x 65 | 4" x 2½" | 18 | Rp. 58.600,- |
| 100 x 75 | 4" x 3" | 18 | Rp. 61.300,- |
| 125 x 75 | 5" x 3" | 9 | Rp. 83.600,- |
| 125 x 100 | 5" x 4" | 10 | Rp. 92.400,- |
| 150 x 75 | 6" x 3" | 5 | Rp. 105.300,- |
| 150 x 100 | 6" x 4" | 5 | Rp. 114.800,- |
| 150 x 125 | 6" x 5" | 5 | Rp. 120.200,- |
| 200 x 100 | 8" x 4" | 4 | Rp. 206.300,- |
| 200 x 125 | 8" x 5" | 2 | Rp. 221.500,- |
| 200 x 150 | 8" x 6" | 2 | Rp. 235.200,- |
| 250 x 200 | 10" x 8" | 2 | Rp. 411.100,- |

FLANGE (AW)



| DN | | ISI / BOX | HARGA / PCS |
|-----|------|-----------|---------------|
| mm | inch | | |
| 50 | 2" | 31 | Rp. 33.500,- |
| 65 | 2½" | 15 | Rp. 43.700,- |
| 75 | 3" | 15 | Rp. 51.800,- |
| 100 | 4" | 12 | Rp. 85.500,- |
| 150 | 6" | 8 | Rp. 195.000,- |

Y - BRANCH (AW)



| DN | | ISI / BOX | HARGA / PCS |
|-----------|----------|-----------|-----------------|
| mm | inch | | |
| 50 | 2" | 20 | Rp. 37.200,- |
| 65 x 50 | 2½" x 2" | 17 | Rp. 48.200,- |
| 65 | 2½" | 10 | Rp. 52.800,- |
| 75 x 50 | 3" x 2" | 11 | Rp. 56.600,- |
| 75 | 3" | 10 | Rp. 80.500,- |
| 100 x 50 | 4" x 2" | 7 | Rp. 101.600,- |
| 100 x 75 | 4" x 3" | 6 | Rp. 115.600,- |
| 100 | 4" | 4 | Rp. 169.500,- |
| 150 x 75 | 6" x 3" | 2 | Rp. 298.000,- |
| 150 x 100 | 6" x 4" | 4 | Rp. 319.900,- |
| 200 x 100 | 8" x 4" | 3 | Rp. 497.200,- |
| 200 | 8" | 2 | Rp. 1.433.900,- |

PLUG (AW)



| DN | | ISI / BOX | HARGA / PCS |
|----|------|-----------------|-------------|
| mm | inch | | |
| 16 | ½" | 1200 (6@200pcs) | Rp. 1.400,- |
| 20 | ¾" | 700 (7@100pcs) | Rp. 1.700,- |
| 25 | 1" | 575 | Rp. 1.900,- |

DOUBLE NIPPLE (AW)



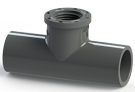
| DN | | ISI / BOX | HARGA / PCS |
|----|------|-----------|-------------|
| mm | inch | | |
| 16 | ½" | 560 | Rp. 1.400,- |
| 20 | ¾" | 335 | Rp. 1.700,- |
| 25 | 1" | 220 | Rp. 2.800,- |

TEE (AW)



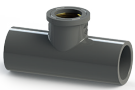
| mm | DN | | ISI / BOX | HARGA / PCS |
|-----------|-----------------|--|-----------|---------------|
| | inch | | | |
| 16 | 1/2" | | 150 | Rp. 3.200,- |
| 20 x 16 | 3/4" x 1/2" | | 100 | Rp. 4.300,- |
| 20 | 3/4" | | 100 | Rp. 4.300,- |
| 25 x 16 | 1" x 1/2" | | 65 | Rp. 6.300,- |
| 25 x 20 | 1" x 3/4" | | 65 | Rp. 6.500,- |
| 25 | 1" | | 60 | Rp. 6.900,- |
| 35 x 16 | 1 1/4" x 1/2" | | 45 | Rp. 9.100,- |
| 35 x 20 | 1 1/4" x 3/4" | | 45 | Rp. 9.800,- |
| 35 x 25 | 1 1/4" x 1" | | 35 | Rp. 11.000,- |
| 35 | 1 1/4" | | 30 | Rp. 11.300,- |
| 40 x 16 | 1 1/2" x 1/2" | | 25 | Rp. 12.600,- |
| 40 x 20 | 1 1/2" x 3/4" | | 24 | Rp. 12.600,- |
| 40 x 25 | 1 1/2" x 1" | | 24 | Rp. 13.500,- |
| 40 x 35 | 1 1/2" x 1 1/4" | | 20 | Rp. 15.000,- |
| 40 | 1 1/2" | | 20 | Rp. 15.000,- |
| 50 x 16 | 2" x 1/2" | | 17 | Rp. 15.100,- |
| 50 x 20 | 2" x 3/4" | | 15 | Rp. 15.300,- |
| 50 x 25 | 2" x 1" | | 15 | Rp. 15.900,- |
| 50 x 35 | 2" x 1 1/4" | | 40 | Rp. 21.700,- |
| 50 x 40 | 2" x 1 1/2" | | 12 | Rp. 21.800,- |
| 50 | 2" | | 30 | Rp. 23.800,- |
| 65 x 40 | 2 1/2" x 1 1/2" | | 6 | Rp. 36.100,- |
| 65 x 50 | 2 1/2" x 2" | | 17 | Rp. 36.300,- |
| 65 | 2 1/2" | | 16 | Rp. 38.800,- |
| 75 x 20 | 3" x 3/4" | | 20 | Rp. 32.300,- |
| 75 x 25 | 3" x 1" | | 18 | Rp. 33.300,- |
| 75 x 35 | 3" x 1 1/4" | | 18 | Rp. 37.300,- |
| 75 x 40 | 3" x 1 1/2" | | 16 | Rp. 39.100,- |
| 75 x 50 | 3" x 2" | | 20 | Rp. 42.100,- |
| 75 x 65 | 3" x 2 1/2" | | 10 | Rp. 48.100,- |
| 75 | 3" | | 12 | Rp. 54.800,- |
| 100 x 40 | 4" x 1 1/2" | | 8 | Rp. 83.700,- |
| 100 x 50 | 4" x 2" | | 6 | Rp. 84.500,- |
| 100 x 65 | 4" x 2 1/2" | | 7 | Rp. 100.300,- |
| 100 x 75 | 4" x 3" | | 6 | Rp. 102.600,- |
| 100 | 4" | | 5 | Rp. 109.400,- |
| 125 x 75 | 5" x 3" | | 4 | Rp. 145.200,- |
| 125 x 100 | 5" x 4" | | 6 | Rp. 149.100,- |
| 125 | 5" | | 5 | Rp. 192.800,- |
| 150 x 50 | 6" x 2" | | 3 | Rp. 217.300,- |
| 150 x 75 | 6" x 3" | | 2 | Rp. 241.500,- |
| 150 x 100 | 6" x 4" | | 2 | Rp. 251.800,- |
| 150 x 125 | 6" x 5" | | 4 | Rp. 272.400,- |
| 150 | 6" | | 3 | Rp. 274.900,- |
| 200 | 8" | | 2 | Rp. 569.600,- |

FAUCET TEE (AW)



| mm | DN | | ISI / BOX | HARGA / PCS |
|-----------|-------------|--|-----------|-------------|
| | inch | | | |
| 16 x 1/2" | 1/2" | | 140 | Rp. 4.100,- |
| 20 x 1/2" | 1/2" x 3/4" | | 100 | Rp. 4.300,- |
| 20 x 3/4" | 3/4" | | 85 | Rp. 4.600,- |

FAUCET TEE with Metal Insert (AW)



| mm | DN | | ISI / BOX | HARGA / PCS |
|-----------|-------------|--|-----------|--------------|
| | inch | | | |
| 16 x 1/2" | 1/2" | | 140 | Rp. 16.300,- |
| 20 x 1/2" | 1/2" x 3/4" | | 110 | Rp. 16.900,- |
| 20 x 3/4" | 3/4" | | 85 | Rp. 29.400,- |

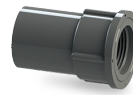
FITTING RUCIKA STANDARD JIS K - 6739 UNTUK APLIKASI AIR KOTOR & BUANGAN

SOCKET (D - DS)



| mm | DN | | ISI / BOX | HARGA / PCS |
|-----|--------|--|-----------|---------------|
| | inch | | | |
| 35 | 1 1/4" | | 200 | Rp. 2.300,- |
| 40 | 1 1/2" | | 115 | Rp. 2.700,- |
| 50 | 2" | | 72 | Rp. 4.000,- |
| 65 | 2 1/2" | | 100 | Rp. 6.500,- |
| 75 | 3" | | 60 | Rp. 10.100,- |
| 100 | 4" | | 30 | Rp. 17.900,- |
| 125 | 5" | | 30 | Rp. 33.600,- |
| 150 | 6" | | 18 | Rp. 43.700,- |
| 200 | 8" | | 8 | Rp. 115.700,- |
| 250 | 10" | | 8 | Rp. 176.800,- |

FAUCET SOCKET (AW)



| mm | DN | | ISI / BOX | HARGA / PCS |
|-------------|-------------|--|-----------|--------------|
| | inch | | | |
| 16 x 1/2" | 1/2" | | 300 | Rp. 2.200,- |
| 20 x 1/2" | 1/2" x 3/4" | | 200 | Rp. 2.600,- |
| 20 x 3/4" | 3/4" | | 180 | Rp. 2.800,- |
| 25 x 1/2" | 1/2" x 1" | | 165 | Rp. 2.800,- |
| 25 x 3/4" | 3/4" x 1" | | 150 | Rp. 3.500,- |
| 16 x 1" | 1" x 1/2" | | 140 | Rp. 3.500,- |
| 20 x 1" | 1" x 3/4" | | 130 | Rp. 3.700,- |
| 25 x 1" | 1" | | 120 | Rp. 4.600,- |
| 35 x 1 1/4" | 1 1/4" | | 60 | Rp. 6.900,- |
| 40 x 1 1/2" | 1 1/2" | | 40 | Rp. 9.100,- |
| 50 x 2" | 2" | | 25 | Rp. 11.300,- |
| 65 x 2 1/2" | 2 1/2" | | 12 | Rp. 11.800,- |
| 75 x 3" | 3" | | 8 | Rp. 28.400,- |
| 100 x 4" | 4" | | 18 | Rp. 55.500,- |

45° ELBOW (AW)



| mm | DN | | ISI / BOX | HARGA / PCS |
|-----|--------|--|-----------|---------------|
| | inch | | | |
| 25 | 1" | | 90 | Rp. 5.300,- |
| 35 | 1 1/4" | | 48 | Rp. 9.100,- |
| 40 | 1 1/2" | | 27 | Rp. 11.400,- |
| 50 | 2" | | 44 | Rp. 19.300,- |
| 65 | 2 1/2" | | 24 | Rp. 29.400,- |
| 75 | 3" | | 18 | Rp. 46.300,- |
| 100 | 4" | | 18 | Rp. 80.200,- |
| 125 | 5" | | 4 | Rp. 118.300,- |
| 150 | 6" | | 4 | Rp. 228.800,- |
| 200 | 8" | | 2 | Rp. 491.400,- |
| 250 | 10" | | 1 | Rp. 991.700,- |

LARGE RADIUS TEE (AW)



| mm | DN | | ISI / BOX | HARGA / PCS |
|-----------|-----------------|--|-----------|---------------|
| | inch | | | |
| 40 | 1 1/2" | | 20 | Rp. 13.000,- |
| 50 x 40 | 2" x 1 1/2" | | 8 | Rp. 23.000,- |
| 50 | 2" | | 6 | Rp. 31.500,- |
| 65 x 40 | 2 1/2" x 1 1/2" | | 6 | Rp. 36.100,- |
| 65 x 50 | 2 1/2" x 2" | | 15 | Rp. 42.500,- |
| 65 | 2 1/2" | | 14 | Rp. 44.800,- |
| 75 x 50 | 3" x 2" | | 14 | Rp. 55.300,- |
| 75 | 3" | | 8 | Rp. 60.300,- |
| 100 x 40 | 4" x 1 1/2" | | 7 | Rp. 91.300,- |
| 100 x 50 | 4" x 2" | | 15 | Rp. 105.300,- |
| 100 x 65 | 4" x 2 1/2" | | 6 | Rp. 127.100,- |
| 100 x 75 | 4" x 3" | | 4 | Rp. 148.200,- |
| 100 | 4" | | 7 | Rp. 177.300,- |
| 125 x 75 | 5" x 3" | | 4 | Rp. 178.800,- |
| 125 x 100 | 5" x 4" | | 6 | Rp. 209.400,- |
| 125 | 5" | | 2 | Rp. 251.800,- |
| 150 x 75 | 6" x 3" | | 5 | Rp. 283.800,- |
| 150 x 100 | 6" x 4" | | 5 | Rp. 336.900,- |
| 150 | 6" | | 3 | Rp. 377.400,- |
| 200 x 100 | 8" x 4" | | 2 | Rp. 528.100,- |
| 200 x 150 | 8" x 6" | | 2 | Rp. 673.200,- |
| 200 | 8" | | 2 | Rp. 783.700,- |

SOCKET (D - DS)

ELBOW (D - DL)



| mm | DN | | ISI / BOX | HARGA / PCS |
|-----|--------|--|-----------|---------------|
| | inch | | | |
| 35 | 1 1/4" | | 90 | Rp. 3.400,- |
| 40 | 1 1/2" | | 60 | Rp. 4.300,- |
| 50 | 2" | | 100 | Rp. 7.000,- |
| 65 | 2 1/2" | | 45 | Rp. 11.200,- |
| 75 | 3" | | 30 | Rp. 16.300,- |
| 100 | 4" | | 15 | Rp. 32.300,- |
| 125 | 5" | | 15 | Rp. 79.200,- |
| 150 | 6" | | 10 | Rp. 94.200,- |
| 200 | 8" | | 3 | Rp. 207.400,- |
| 250 | 10" | | 2 | Rp. 412.800,- |
| 300 | 12" | | 1 | Rp. 624.100,- |

CLEAN OUT (D)



| DN | | ISI / BOX | HARGA / PCS |
|-----|------|-----------|--------------|
| mm | inch | | |
| 50 | 2" | 90 | Rp. 7.100,- |
| 75 | 3" | 80 | Rp. 11.200,- |
| 100 | 4" | 36 | Rp. 28.900,- |

P-TRAP (D)



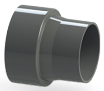
| DN | | ISI / BOX | HARGA / PCS |
|----|------|-----------|--------------|
| mm | inch | | |
| 40 | 1½" | 18 | Rp. 15.600,- |
| 50 | 2" | 12 | Rp. 16.400,- |
| 75 | 3" | 12 | Rp. 34.900,- |

LARGE RADIUS TEE (D - LT)



| DN | | ISI / BOX | HARGA / PCS |
|-----------|-----------|-----------|---------------|
| mm | inch | | |
| 40 x 35 | 1½" x 1¼" | 35 | Rp. 7.900,- |
| 40 | 1½" | 30 | Rp. 8.000,- |
| 50 x 40 | 2" x 1½" | 18 | Rp. 11.400,- |
| 50 | 2" | 15 | Rp. 15.600,- |
| 65 x 40 | 2½" x 1½" | 10 | Rp. 15.900,- |
| 65 x 50 | 2½" x 2" | 30 | Rp. 19.400,- |
| 65 | 2½" | 18 | Rp. 24.300,- |
| 75 x 50 | 3" x 2" | 20 | Rp. 25.400,- |
| 75 x 65 | 3" x 2½" | 16 | Rp. 32.800,- |
| 75 | 3" | 15 | Rp. 33.400,- |
| 100 x 40 | 4" x 1½" | 15 | Rp. 36.200,- |
| 100 x 50 | 4" x 2" | 14 | Rp. 39.200,- |
| 100 x 75 | 4" x 3" | 8 | Rp. 53.600,- |
| 100 | 4" | 6 | Rp. 61.300,- |
| 125 x 100 | 5" x 4" | 4 | Rp. 105.700,- |
| 150 x 75 | 6" x 3" | 5 | Rp. 108.000,- |
| 150 x 100 | 6" x 4" | 5 | Rp. 134.500,- |
| 150 | 6" | 4 | Rp. 198.600,- |
| 200 x 100 | 8" x 4" | 3 | Rp. 294.300,- |
| 200 x 150 | 8" x 6" | 2 | Rp. 328.800,- |

INCREASER (D - IN)



| DN | | ISI / BOX | HARGA / PCS |
|-----------|-----------|-----------|---------------|
| mm | inch | | |
| 40 x 35 | 1½" x 1¼" | 90 | Rp. 3.400,- |
| 50 x 35 | 2" x 1¼" | 90 | Rp. 4.300,- |
| 50 x 40 | 2" x 1½" | 75 | Rp. 4.500,- |
| 65 x 40 | 2½" x 1½" | 45 | Rp. 6.900,- |
| 65 x 50 | 2½" x 2" | 45 | Rp. 7.300,- |
| 75 x 35 | 3" x 1¼" | 32 | Rp. 6.300,- |
| 75 x 40 | 3" x 1½" | 32 | Rp. 8.700,- |
| 75 x 50 | 3" x 2" | 32 | Rp. 9.300,- |
| 75 x 65 | 3" x 2½" | 28 | Rp. 9.400,- |
| 100 x 50 | 4" x 2" | 40 | Rp. 15.600,- |
| 100 x 65 | 4" x 2½" | 40 | Rp. 17.300,- |
| 100 x 75 | 4" x 3" | 35 | Rp. 18.200,- |
| 125 x 75 | 5" x 3" | 25 | Rp. 32.300,- |
| 125 x 100 | 5" x 4" | 20 | Rp. 34.200,- |
| 150 x 75 | 6" x 3" | 12 | Rp. 50.300,- |
| 150 x 100 | 6" x 4" | 10 | Rp. 51.000,- |
| 150 x 125 | 6" x 5" | 10 | Rp. 64.900,- |
| 200 x 100 | 8" x 4" | 8 | Rp. 108.900,- |
| 200 x 150 | 8" x 6" | 4 | Rp. 112.900,- |

LARGE RADIUS ELBOW (D - LL)



| DN | | ISI / BOX | HARGA / PCS |
|-----|------|-----------|---------------|
| mm | inch | | |
| 35 | 1¼" | 60 | Rp. 5.300,- |
| 40 | 1½" | 40 | Rp. 8.000,- |
| 50 | 2" | 20 | Rp. 11.400,- |
| 65 | 2½" | 30 | Rp. 16.700,- |
| 75 | 3" | 18 | Rp. 25.500,- |
| 100 | 4" | 8 | Rp. 53.100,- |
| 125 | 5" | 5 | Rp. 95.800,- |
| 150 | 6" | 6 | Rp. 159.400,- |

LARGE RADIUS DOUBLE TEE (D - WLT)



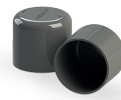
| DN | | ISI / BOX | HARGA / PCS |
|-----------|---------|-----------|--------------|
| mm | inch | | |
| 50 x 50 | 2" x 2" | 10 | Rp. 19.500,- |
| 75 x 50 | 3" x 2" | 15 | Rp. 28.900,- |
| 100 x 100 | 4" x 4" | 8 | Rp. 99.100,- |

Y - BRANCH (D - Y)



| DN | | ISI / BOX | HARGA / PCS |
|-----------|-----------|-----------|---------------|
| mm | inch | | |
| 40 x 35 | 1½" x 1¼" | 40 | Rp. 7.600,- |
| 40 | 1½" | 30 | Rp. 9.000,- |
| 50 x 35 | 2" x 1¼" | 24 | Rp. 9.100,- |
| 50 | 2" | 18 | Rp. 14.000,- |
| 65 x 50 | 2½" x 2" | 27 | Rp. 16.900,- |
| 65 | 2½" | 25 | Rp. 19.400,- |
| 75 x 50 | 3" x 2" | 20 | Rp. 24.500,- |
| 75 | 3" | 15 | Rp. 30.000,- |
| 100 x 50 | 4" x 2" | 15 | Rp. 38.200,- |
| 100 x 75 | 4" x 3" | 8 | Rp. 53.700,- |
| 100 | 4" | 6 | Rp. 62.400,- |
| 125 x 100 | 5" x 4" | 9 | Rp. 90.000,- |
| 150 x 75 | 6" x 3" | 8 | Rp. 131.200,- |
| 150 x 100 | 6" x 4" | 5 | Rp. 156.400,- |
| 150 | 6" | 6 | Rp. 194.400,- |
| 200 x 100 | 8" x 4" | 3 | Rp. 309.800,- |
| 200 x 150 | 8" x 6" | 2 | Rp. 365.000,- |

CAP (D)



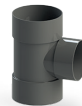
| DN | | ISI / BOX | HARGA / PCS |
|-----|------|-----------|--------------|
| mm | inch | | |
| 35 | 1¼" | 144 | Rp. 3.900,- |
| 40 | 1½" | 84 | Rp. 5.300,- |
| 50 | 2" | 54 | Rp. 7.300,- |
| 65 | 2½" | 38 | Rp. 9.100,- |
| 75 | 3" | 60 | Rp. 11.400,- |
| 100 | 4" | 30 | Rp. 21.300,- |

45° ELBOW (D - 45 L)



| DN | | ISI / BOX | HARGA / PCS |
|-----|------|-----------|---------------|
| mm | inch | | |
| 35 | 1¼" | 100 | Rp. 3.200,- |
| 40 | 1½" | 75 | Rp. 3.700,- |
| 50 | 2" | 100 | Rp. 7.300,- |
| 65 | 2½" | 60 | Rp. 9.800,- |
| 75 | 3" | 35 | Rp. 15.900,- |
| 100 | 4" | 15 | Rp. 26.900,- |
| 125 | 5" | 15 | Rp. 51.200,- |
| 150 | 6" | 10 | Rp. 99.100,- |
| 200 | 8" | 4 | Rp. 218.600,- |
| 250 | 10" | 2 | Rp. 304.300,- |
| 300 | 12" | 1 | Rp. 478.200,- |

TEE (D - DT)



| DN | | ISI / BOX | HARGA / PCS |
|-----------|-----------|-----------|---------------|
| mm | inch | | |
| 35 | 1¼" | 55 | Rp. 4.500,- |
| 40 | 1½" | 40 | Rp. 6.300,- |
| 50 | 2" | 65 | Rp. 9.300,- |
| 65 x 40 | 2½" x 1½" | 16 | Rp. 11.900,- |
| 65 x 50 | 2½" x 2" | 45 | Rp. 14.400,- |
| 65 | 2½" | 32 | Rp. 16.600,- |
| 75 x 40 | 3" x 1½" | 36 | Rp. 16.600,- |
| 75 x 50 | 3" x 2" | 30 | Rp. 19.200,- |
| 75 x 65 | 3" x 2½" | 22 | Rp. 21.300,- |
| 75 | 3" | 20 | Rp. 24.900,- |
| 100 x 40 | 4" x 1½" | 18 | Rp. 29.800,- |
| 100 x 50 | 4" x 2" | 15 | Rp. 31.700,- |
| 100 x 75 | 4" x 3" | 12 | Rp. 37.200,- |
| 100 | 4" | 8 | Rp. 42.500,- |
| 125 x 75 | 5" x 3" | 8 | Rp. 60.500,- |
| 125 x 100 | 5" x 4" | 6 | Rp. 72.000,- |
| 125 | 5" | 10 | Rp. 75.400,- |
| 150 x 100 | 6" x 4" | 8 | Rp. 101.600,- |
| 150 | 6" | 6 | Rp. 129.800,- |
| 200 x 100 | 8" x 4" | 4 | Rp. 138.000,- |
| 200 | 8" | 2 | Rp. 269.400,- |
| 250 x 200 | 10" x 8" | 2 | Rp. 435.500,- |

CLEAN OUT CAP (D - CO)



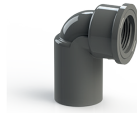
| DN | | ISI / BOX | HARGA / PCS |
|-----|------|-----------|--------------|
| mm | inch | | |
| 100 | 4" | 27 | Rp. 29.500,- |

Clean Out (AW)



| DN | | ISI / BOX | HARGA / PCS |
|-----|------|-----------|---------------|
| mm | inch | | |
| 50 | 2" | 36 | Rp. 14.100,- |
| 75 | 3" | 16 | Rp. 31.000,- |
| 100 | 4" | 18 | Rp. 51.500,- |
| 150 | 6" | 2 | Rp. 134.900,- |

FAUCET ELBOW (AW)



| DN | | ISI / BOX | HARGA / PCS |
|-----------|-------------|-----------|-------------|
| mm | inch | | |
| 16 x 1/2" | 1/2" | 200 | Rp. 2.500,- |
| 20 x 1/2" | 1/2" x 3/4" | 175 | Rp. 2.800,- |
| 20 x 3/4" | 3/4" | 130 | Rp. 3.700,- |
| 25 x 1" | 1" | 85 | Rp. 5.300,- |

UNION SOCKET (AW)



| DN | | ISI / BOX | HARGA / PCS |
|----|--------|-----------|---------------|
| mm | inch | | |
| 16 | 1/2" | 110 | Rp. 32.600,- |
| 20 | 3/4" | 72 | Rp. 39.900,- |
| 25 | 1" | 54 | Rp. 54.800,- |
| 35 | 1 1/4" | 30 | Rp. 90.900,- |
| 40 | 1 1/2" | 18 | Rp. 123.900,- |

UNION THREAD (AW)



| DN | | ISI / BOX | HARGA / PCS |
|----|--------|-----------|---------------|
| mm | inch | | |
| 16 | 1/2" | 110 | Rp. 32.600,- |
| 20 | 3/4" | 72 | Rp. 39.900,- |
| 25 | 1" | 54 | Rp. 54.800,- |
| 35 | 1 1/4" | 30 | Rp. 90.900,- |
| 40 | 1 1/2" | 18 | Rp. 123.900,- |

*Harga sudah termasuk PPN 11%
DN: Diameter Nominal

Efektif : 13 September 2022



In Partnership with KEKELIT



PIPA DAN FITTING PP-R SPESIALIS AIR PANAS DAN DINGIN BERTEKANAN

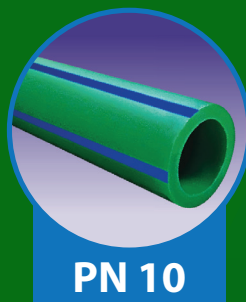
PT. Wahana Duta Jaya Rucika terus memberikan inovasi berbagai produk sistem perpipaan. Bekerjasama dengan **KE KELIT** dari Austria, **RUCIKA KELEN GREEN** merupakan sistem perpipaan lengkap yang dapat dipergunakan untuk saluran air panas dan dingin bertekanan. Materialnya terbuat dari bahan *Polypropylene Random* (PP-R) type 3 / PP-R 80. Dengan jentang produk yang luas, pipa **RUCIKA KELEN GREEN** tersedia dalam berbagai kelas tekanan dan temperatur dengan variasi ketebalan dinding sesuai dengan penggunaannya.

Sistem sambungan yang digunakan oleh **RUCIKA KELEN GREEN** adalah sistem penyambungan *heat fusion* dengan menggunakan alat pemanas. Dengan sistem sambungan ini, hasil penyambungan menjadi bersenyawa sehingga terjamin kekuatannya (sama dengan kekuatan pipa), anti kebocoran dan bebas perawatan serta umur penggunaan sampai 50 tahun.

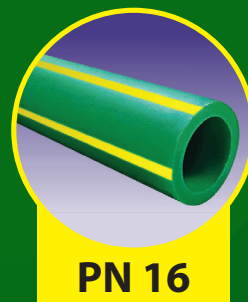
DAFTAR HARGA PIPA & FITTING



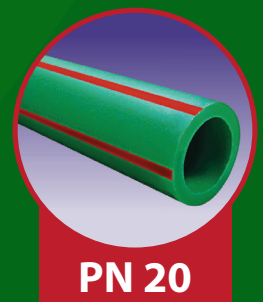
PIPA PP-R RUCIKA KELEN GREEN PANJANG 4 M / BATANG



PN 10



PN 16



PN 20

| DN | | PN 10 | | PN 16 | | PN 20 | |
|--------|-----|---------------|---------------|---------------|---------------|---------------|---------------|
| INCH | MM | Exc. PPN* | Incl. PPN** | Exc. PPN* | Incl. PPN** | Exc. PPN* | Incl. PPN** |
| 1/2" | 20 | Rp. 39.820 | Rp. 44.200 | Rp. 49.009 | Rp. 54.400 | Rp. 55.225 | Rp. 61.300 |
| 3/4" | 25 | Rp. 52.162 | Rp. 57.900 | Rp. 76.577 | Rp. 85.000 | Rp. 84.775 | Rp. 94.100 |
| 1" | 32 | Rp. 83.874 | Rp. 93.100 | Rp. 123.063 | Rp. 136.600 | Rp. 139.369 | Rp. 154.700 |
| 1 1/4" | 40 | Rp. 132.883 | Rp. 147.500 | Rp. 191.261 | Rp. 212.300 | Rp. 214.865 | Rp. 238.500 |
| 1 1/2" | 50 | Rp. 206.036 | Rp. 228.700 | Rp. 298.649 | Rp. 331.500 | Rp. 335.766 | Rp. 372.700 |
| 2" | 63 | Rp. 326.126 | Rp. 362.000 | Rp. 469.640 | Rp. 521.300 | Rp. 531.982 | Rp. 590.500 |
| 2 1/2" | 75 | Rp. 456.306 | Rp. 506.500 | Rp. 668.649 | Rp. 742.200 | Rp. 753.153 | Rp. 836.000 |
| 3" | 90 | Rp. 658.649 | Rp. 731.100 | Rp. 958.378 | Rp. 1.063.800 | Rp. 1.082.432 | Rp. 1.201.500 |
| 4" | 110 | Rp. 978.108 | Rp. 1.085.700 | Rp. 1.435.766 | Rp. 1.593.700 | Rp. 1.617.658 | Rp. 1.795.600 |
| 6" | 160 | Rp. 3.333.423 | Rp. 3.700.100 | Rp. 4.833.423 | Rp. 5.365.100 | Rp. 5.512.883 | Rp. 6.119.300 |



Keterangan :

- * Harga belum termasuk PPN 11%
- ** Harga sudah termasuk PPN 11%
- **PN10** : Aplikasi air panas & dingin tekanan kerja maksimal 10 Bar
- **PN16** : Aplikasi air panas & dingin tekanan kerja maksimal 16 Bar
- **PN20** : Aplikasi air panas & dingin tekanan kerja maksimal 20 Bar
- Harga dapat berubah sewaktu-waktu tanpa pemberitahuan terlebih dahulu
- DN: Diameter Nominal
- Efektif : 13 September 2022

FITTING PP-R UNTUK APLIKASI AIR PANAS & AIR DINGIN BERTEKANAN

COUPLER



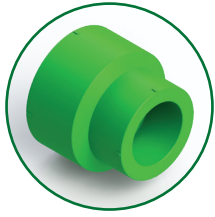
| DN (mm) | Harga Exc. PPN (Rp) | Harga Inc. PPN (Rp) |
|---------|---------------------|---------------------|
| 20 | 3.423 | 3.800 |
| 25 | 3.694 | 4.100 |
| 32 | 4.955 | 5.500 |
| 40 | 9.640 | 10.700 |
| 50 | 18.919 | 21.000 |
| 63 | 30.000 | 33.300 |
| 75 | 71.892 | 79.800 |
| 90 | 87.207 | 96.800 |
| 110 | 128.288 | 142.400 |
| 160 | 641.982 | 712.600 |

CAP



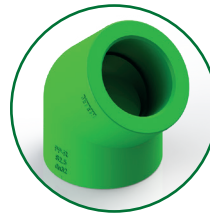
| DN (mm) | Harga Exc. PPN (Rp) | Harga Inc. PPN (Rp) |
|---------|---------------------|---------------------|
| 20 | 2.703 | 3.000 |
| 25 | 3.333 | 3.700 |
| 32 | 5.586 | 6.200 |
| 40 | 25.405 | 28.200 |
| 50 | 27.748 | 30.800 |
| 63 | 39.189 | 43.500 |
| 75 | 107.207 | 119.000 |
| 90 | 372.883 | 413.900 |
| 110 | 411.982 | 457.300 |
| 160 | 1.763.694 | 1.957.700 |

REDUCER FEMALE



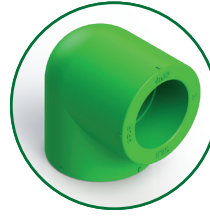
| DN (mm) | Harga Exc. PPN (Rp) | Harga Inc. PPN (Rp) |
|---------|---------------------|---------------------|
| 25x20 | 3.694 | 4.100 |
| 32x20 | 6.216 | 6.900 |
| 32x25 | 7.297 | 8.100 |
| 40x20 | 9.640 | 10.700 |
| 40x25 | 9.640 | 10.700 |
| 40x32 | 11.441 | 12.700 |
| 50x20 | 13.333 | 14.800 |
| 50x25 | 15.315 | 17.000 |
| 50x32 | 17.207 | 19.100 |
| 50x40 | 18.468 | 20.500 |
| 63x25 | 20.360 | 22.600 |
| 63x32 | 21.441 | 23.800 |
| 63x40 | 31.441 | 34.900 |
| 63x50 | 33.333 | 37.000 |
| 75x32 | 39.009 | 43.300 |
| 75x40 | 42.793 | 47.500 |
| 75x50 | 44.685 | 49.600 |
| 75x63 | 49.820 | 55.300 |
| 90x32 | 52.883 | 58.700 |
| 90x40 | 55.405 | 61.500 |
| 90x50 | 57.477 | 63.800 |
| 90x63 | 66.486 | 73.800 |
| 90x75 | 75.495 | 83.800 |
| 110x50 | 106.667 | 118.400 |
| 110x63 | 108.378 | 120.300 |
| 110x75 | 141.351 | 156.900 |
| 110x90 | 175.856 | 195.200 |
| 160x110 | 279.369 | 310.100 |

ELBOW 45°



| DN (mm) | Harga Exc. PPN (Rp) | Harga Inc. PPN (Rp) |
|---------|---------------------|---------------------|
| 20 | 4.595 | 5.100 |
| 25 | 6.577 | 7.300 |
| 32 | 8.829 | 9.800 |
| 40 | 16.757 | 18.600 |
| 50 | 29.730 | 33.000 |
| 63 | 62.432 | 69.300 |
| 75 | 92.793 | 103.000 |
| 90 | 158.649 | 176.100 |
| 110 | 251.532 | 279.200 |
| 160 | 1.016.757 | 1.128.600 |

ELBOW 90°



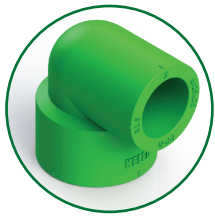
| DN (mm) | Harga Exc. PPN (Rp) | Harga Inc. PPN (Rp) |
|---------|---------------------|---------------------|
| 20 | 5.315 | 5.900 |
| 25 | 6.847 | 7.600 |
| 32 | 7.838 | 8.700 |
| 40 | 16.306 | 18.100 |
| 50 | 25.946 | 28.800 |
| 63 | 44.324 | 49.200 |
| 75 | 77.297 | 85.800 |
| 90 | 128.468 | 142.600 |
| 110 | 197.838 | 219.600 |
| 160 | 1.154.865 | 1.281.900 |

REDUCER MALE / FEMALE



| DN (mm) | Harga Exc. PPN (Rp) | Harga Inc. PPN (Rp) |
|---------|---------------------|---------------------|
| 25x20 | 4.505 | 5.000 |
| 32x20 | 6.306 | 7.000 |
| 32x25 | 8.108 | 9.000 |
| 40x25 | 11.982 | 13.300 |
| 40x32 | 14.144 | 15.700 |
| 50x32 | 21.351 | 23.700 |

REDUCED ELBOW



| DN (mm) | Harga Exc. PPN (Rp) | Harga Inc. PPN (Rp) |
|---------|---------------------|---------------------|
| 25x20 | 6.036 | 6.700 |
| 32x20 | 6.216 | 6.900 |
| 32x25 | 7.027 | 7.800 |

REDUCED TEE



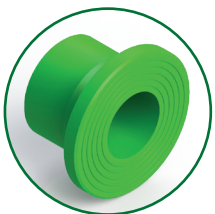
| DN (mm) | Harga Exc. PPN (Rp) | Harga Inc. PPN (Rp) |
|-------------|---------------------|---------------------|
| 25x20x25 | 8.829 | 9.800 |
| 32x20x32 | 10.000 | 11.100 |
| 32x25x32 | 10.811 | 12.000 |
| 40x20x40 | 21.622 | 24.000 |
| 40x25x40 | 22.072 | 24.500 |
| 40x32x40 | 27.658 | 30.700 |
| 50x20x50 | 40.450 | 44.900 |
| 50x25x50 | 44.955 | 49.900 |
| 50x32x50 | 46.396 | 51.500 |
| 50x40x50 | 56.577 | 62.800 |
| 63x20x63 | 71.441 | 79.300 |
| 63x25x63 | 72.613 | 80.600 |
| 63x32x63 | 73.694 | 81.800 |
| 63x40x63 | 75.495 | 83.800 |
| 63x50x63 | 78.649 | 87.300 |
| 75x25x75 | 90.180 | 100.100 |
| 75x32x75 | 95.315 | 105.800 |
| 75x40x75 | 101.532 | 112.700 |
| 75x50x75 | 142.883 | 158.600 |
| 75x63x75 | 142.883 | 158.600 |
| 90x32x90 | 151.622 | 168.300 |
| 90x40x90 | 162.523 | 180.400 |
| 90x50x90 | 178.378 | 198.000 |
| 90x63x90 | 185.405 | 205.800 |
| 90x75x90 | 232.072 | 257.600 |
| 110x50x110 | 266.667 | 296.000 |
| 110x63x110 | 287.838 | 319.500 |
| 110x75x110 | 328.468 | 364.600 |
| 110x90x110 | 361.351 | 401.100 |
| 160x90x160 | 776.757 | 862.200 |
| 160x110x160 | 870.180 | 965.900 |

STRAIGHT WAY VALVE



| DN (mm) | Harga Exc. PPN (Rp) | Harga Inc. PPN (Rp) |
|---------|---------------------|---------------------|
| 20 | 109.730 | 121.800 |
| 25 | 175.766 | 195.100 |
| 32 | 247.207 | 274.400 |
| 40 | 372.883 | 413.900 |
| 50 | 451.802 | 501.500 |
| 63 | 784.144 | 870.400 |

FLANGE ADAPTOR*



| DN (mm) | Harga Exc. PPN (Rp) | Harga Inc. PPN (Rp) |
|---------|---------------------|---------------------|
| 63 | 42.252 | 46.900 |
| 75 | 94.324 | 104.700 |
| 90 | 144.505 | 160.400 |
| 110 | 180.721 | 200.600 |

*PN 10, Female Connection

EQUAL TEE



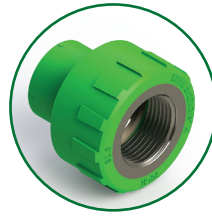
| DN (mm) | Harga Exc. PPN (Rp) | Harga Inc. PPN (Rp) |
|---------|---------------------|---------------------|
| 20 | 5.315 | 5.900 |
| 25 | 6.486 | 7.200 |
| 32 | 9.369 | 10.400 |
| 40 | 19.910 | 22.100 |
| 50 | 32.423 | 36.000 |
| 63 | 77.658 | 86.200 |
| 75 | 123.694 | 137.300 |
| 90 | 160.721 | 178.400 |
| 110 | 283.333 | 314.500 |
| 160 | 1.443.423 | 1.602.200 |

MALE THREAD JOINT



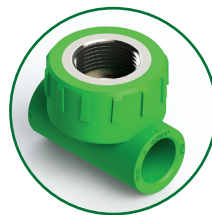
| DN (mm) | Harga Exc. PPN (Rp) | Harga Inc. PPN (Rp) |
|-----------|---------------------|---------------------|
| 20x1/2" | 36.577 | 40.600 |
| 20x3/4" | 55.315 | 61.400 |
| 25x1/2" | 36.757 | 40.800 |
| 25x3/4" | 51.351 | 57.000 |
| 32x3/4" | 80.450 | 89.300 |
| 32x1" | 94.955 | 105.400 |
| 40x1-1/4" | 181.802 | 201.800 |
| 50x1-1/2" | 286.216 | 317.700 |
| 63x2" | 434.775 | 482.600 |
| 75x2-1/2" | 802.162 | 890.400 |
| 90x3" | 1.257.117 | 1.395.400 |

FEMALE THREAD JOINT



| DN (mm) | Harga Exc. PPN (Rp) | Harga Inc. PPN (Rp) |
|-----------|---------------------|---------------------|
| 20x1/2" | 28.559 | 31.700 |
| 20x3/4" | 41.712 | 46.300 |
| 25x1/2" | 30.811 | 34.200 |
| 25x3/4" | 37.748 | 41.900 |
| 32x3/4" | 72.162 | 80.100 |
| 32x1" | 79.369 | 88.100 |
| 40x1-1/4" | 212.072 | 235.400 |
| 50x1-1/2" | 216.216 | 240.000 |
| 63x2" | 395.946 | 439.500 |
| 75x2-1/2" | 499.730 | 554.700 |
| 90x3" | 735.315 | 816.200 |

FEMALE THREAD TEE



| DN (mm) | Harga Exc. PPN (Rp) | Harga Inc. PPN (Rp) |
|---------|---------------------|---------------------|
| 20x1/2" | 34.955 | 38.800 |
| 20x3/4" | 39.640 | 44.000 |
| 25x1/2" | 44.234 | 49.100 |
| 25x3/4" | 50.811 | 56.400 |
| 32x1/2" | 58.468 | 64.900 |
| 32x3/4" | 66.126 | 73.400 |
| 32x1" | 106.757 | 118.500 |

MALE THREAD TEE



| DN (mm) | Harga Exc. PPN (Rp) | Harga Inc. PPN (Rp) |
|---------|---------------------|---------------------|
| 20x1/2" | 48.559 | 53.900 |
| 20x3/4" | 66.306 | 73.600 |
| 25x1/2" | 50.811 | 56.400 |
| 25x3/4" | 62.342 | 69.200 |
| 32x1/2" | 115.946 | 128.700 |
| 32x3/4" | 119.640 | 132.800 |
| 32x1" | 176.937 | 196.400 |

ELBOW FEMALE THREAD WITH DISK



| DN (mm) | Harga Exc. PPN (Rp) | Harga Inc. PPN (Rp) |
|---------|---------------------|---------------------|
| 20x1/2" | 45.766 | 50.800 |
| 25x1/2" | 46.036 | 51.100 |

ELBOW MALE THREAD WITH DISK



| DN (mm) | Harga Exc. PPN (Rp) | Harga Inc. PPN (Rp) |
|---------|---------------------|---------------------|
| 20x1/2" | 64.685 | 71.800 |
| 25x1/2" | 66.216 | 73.500 |

ELBOW FEMALE THREAD 90°



| DN (mm) | Harga Exc. PPN (Rp) | Harga Inc. PPN (Rp) |
|---------|---------------------|---------------------|
| 20x1/2" | 30.721 | 34.100 |
| 25x1/2" | 39.730 | 44.100 |
| 25x3/4" | 46.577 | 51.700 |
| 32x1" | 97.568 | 108.300 |

ELBOW MALE THREAD 90°



| DN (mm) | Harga Exc. PPN (Rp) | Harga Inc. PPN (Rp) |
|---------|---------------------|---------------------|
| 20x1/2" | 44.054 | 48.900 |
| 25x1/2" | 48.018 | 53.300 |
| 25x3/4" | 67.838 | 75.300 |
| 32x1" | 104.144 | 115.600 |

Catatan :

1. Exc. PPN: Harga fitting belum termasuk PPN 11 %
2. Inc. PPN: Harga fitting sudah termasuk PPN 11%
3. Harga loco pabrik di Cibitung, Bekasi
4. Harga dapat berubah sewaktu-waktu tanpa pemberitahuan terlebih dahulu
5. DN: Diameter Nominal
6. Efektif : 13 September 2022

PT WAHANA DUTA JAYA RUCIKA

ALIA Building 7th Floor, Jl. M.I Ridwan Rais 10-18,
Jakarta 10110 - INDONESIA

Telp : (021) 386 7717
Fax : (021) 386 7686
Email : info@rucika.co.id

www.rucika.co.id |  Rucika  @rucikaofficial  @rucikaofficial